



DECLARATION OF PERFORMANCE

No. DOP-Terralys LF 68/68-v4

Terralys LF 68/68

1. Unique identification code of the product-type: **Terralys® LF (woven geotextiles)**
2. Type, batch or serial number or any other element allowing identification of the construction product:
Terralys LF 68/68
3. Intended use: Table is listed on next page.
4. Name, registered trade name or registered trade mark and contact address of the certificate holder:
**Beaulieu Technical Textiles SA, Boulevard Industriel 3, 7780 Comines-Warneton ,Belgium
Tel. +32(0)56 56 06 70, btt@bintg.com**
5. Where applicable, name and contact address of the authorised representative whose mandate covers the tasks specified: **Not applicable**
6. System or systems of assessment and verification of constancy of performance of the construction product:
System 2+
7. The notified body **COPRO** performed under system 2+ the following tasks:
 - o the initial inspection of the manufacturing plant and of factory production control, and
 - o continuous surveillance, assessment and evaluation of factory production control, and issued the certificate of conformity (n° **1137-CPR-0613/29**) of the factory production control.
8. Declared performance: Table is listed on next page.

The performance of the product identified above is in conformity with the declared performance in the following table on the next page. This declaration of performance is issued under the sole responsibility of the certificate holder identified in point 4.

Signed for and on behalf of the certificate holder by

Bart De Bleeckere
General Plant Manager Division Technical Textiles
Comines-Warneton, 08/06/2021

DECLARATION OF PERFORMANCE

No. DOP-Terralys LF 68/68-v4

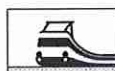
Technical Textiles

Terralys LF 68/68

Intended Uses



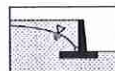
X EN 13249:2016



X EN 13250:2016



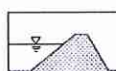
X EN 13251:2016



X EN 13252:2016



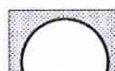
X EN 13253:2016



X EN 13254:2016



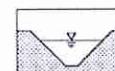
X EN 13255:2016



EN 13256:2016



X EN 13257:2016

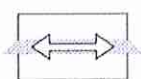


X EN 13265:2016

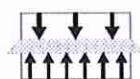
Functions



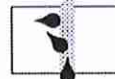
X Filtration



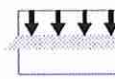
X Reinforcement



X Separation



Drainage



Protection

Declared Performance

Mechanical characteristics	Test method	Performance	Tolerance	Unit
Tensile Strength MD	EN ISO 10319	68,00	-8,00	kN/m
Tensile Strength CMD	EN ISO 10319	68,00	-8,00	kN/m
Elongation MD	EN ISO 10319	14,0	± 4,0	%
Elongation CMD	EN ISO 10319	14,0	± 4,0	%
Dynamic Perforation Resistance	EN ISO 13433	12	+ 3	mm
Resistance to Static Puncture	EN ISO 12236	8,00	-1,60	kN
Hydraulic characteristics	Test method	Performance	Tolerance	Unit
Water Permeability	EN ISO 11058	0,004	-0,001	m/s
Characteristic Opening Size	EN ISO 12956	190	± 57	µm
Descriptive characteristics	Test method	Performance	Tolerance	Unit
Mass per unit area	EN ISO 9864	278	± 28	g/m ²
Standard roll length		on request	± 2 %	lm
Standard roll width		on request	± 5 cm	cm

Durability

To be covered within 1 month after installation. Predicted to be durable for a minimum of 100 years in natural soils with pH between 4 and 9 and soil temperatures lower than 25°C. Consist solely of polypropylene material and passed the oxidation test according to EN ISO 13438.

Note: The values presented in the tables above are indicative, they are offered solely to provide possible suggestions. We reserve the right to alter the results of these materials without prior notice. As the installation and the conditions of use are beyond our control, Beaulieu Technical Textiles cannot accept responsibility for the performance of any of these products. The properties listed herein are provided as information only and in no way can create any warranty.